

## Tulip - Dutch Barge

£39,950

Introducing Tulip, a beautiful 36ft Dutch barge built by Starvo Kruisers in 1978. With a wheelhouse housing a host of navigation equipment ideal for exploring. Tulip offers a perfect blend of comfort and adventure.

- Dutch Starvo Cruiser
- BMC 120hp Engine
- 36ft by 11ft
- Norfolk Broads



Scan here for the  
3D Tour

## Boat Specification

Plating Specification: Steel  
 Hull Shape: V Bottom  
 Flooring: Wooden  
 Cabin Sides: Ply  
 Insulation: Unknown  
 Windows: Throughout

## Engine Details

Engine Make/Model: BMC 120hp  
 No. Cylinders: Six  
 Cooling Type: Unknown  
 Gear Box Make/Model: PRM  
 Fuel Type: Diesel  
 Fuel Tank Capacity: 300 Litres  
 Bow Thruster: Electric Bow Thruster

Additional Information:

## Hot Water & Heating

Hot Water Source: Calorifier/Eberspacher  
 Central Heating: Eberspacher  
 Stove Make/Type: n/a  
 Water Tank Capacity: 400 Litres

## Electrical System

12v: Yes  
 240v: Yes  
 Inverter: Yes  
 Generator: n/a  
 Batteries: 1 Starter, 3 Leisure  
 Solar Panels: n/a  
 Notes: Raymarine chart plotter, compass,  
 wind speed, tribata log, GPS, Radar



**Viewings by appointment  
only. Please call us to arrange.**



## Galley

Cooker: 4 Burner Gas Hob  
 Fridge/Freezer: Yes  
 Gas/12v/240v:: Unknown  
 Additional Information:



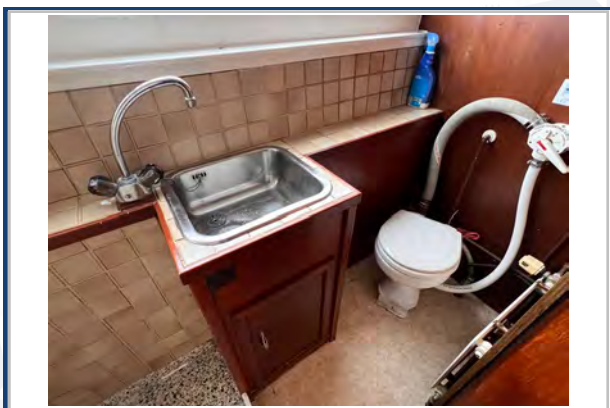
## Accommodation

No. of Berths: Six  
 Fixed: Double  
 Additional Berths: Dinette & Forward cabin seating



## Bathroom

Toilet: Yes  
 Bath / Shower: Shower  
 Vanity Basin: Yes  
 Additional Information:



## Vessel History

BSC/RCD: n/a Boat is out of the water  
 Maintenance: Antifouled June 2024.

## Additional Information

Wheelhouse

### Please Note:

No guarantee is given or implied in respect of age, specification, condition, suitability for a particular purpose or legal title. All vessels are sold without warranty or condition as to the fitness either expressed or implied by status or otherwise. No appliances or systems have been tested. All measurements stated are approximate. These details are not intended to, and do not, form any part of any current or future contract. In this transaction we are acting as Brokers only. All sales subject to contract. We are relying on information supplied solely by the seller and the Company cannot be held responsible or liable if information is proven to be inaccurate. All information is given as a guide. Plating thickness cannot be measured during Nationwide Boat Sales visit while the boat is in the water and is based on information supplied by the owner. A prospective buyer is strongly advised to check the particulars and where appropriate at their own expense to employ a qualified insured Marine Surveyor to carry out a survey of the vessel. It is ultimately the responsibility of the buyer to ensure that all the particulars are accurate prior or during the purchase of the boat. Nationwide Boat Sales advises that a qualified independent surveyor carries out a full out of water survey for every vessel.