



## Kettle - Narrowboat

£49,950

Introducing Kettle, a 60ft Traditional stern built by Dave Clarke in 1991. Signifying the care invested in its maintenance, the boat was freshly blacked with 6 anodes in June 2024 and carries a BSC valid until 2025.

Kettle promises not just a boating experience, but a homely environment on the water.

- Traditional Stern
- BMC 1.8
- 60ft by 6ft 10'
- Staffordshire



Scan here for the  
3D Tour

## Boat Specification

Plating Specification:	Steel 10/6/4
Hull Shape:	Flat Bottom
Flooring:	Lino
Cabin Sides:	Tongue & Groove
Insulation:	Unknown
Windows:	Top Opening

## Engine Details

Engine Make/Model:	BMC 1.8
No. Cylinders:	Four
Cooling Type:	Keel
Gear Box Make/Model:	Unknown
Fuel Type:	Diesel
Fuel Tank Capacity:	200 Litres
Bow Thruster:	n/a

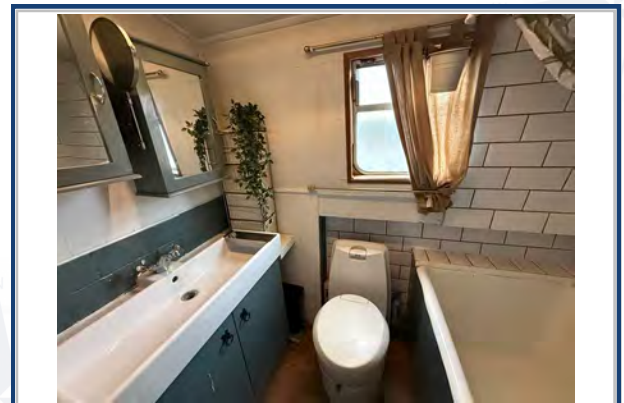
Additional Information:

## Hot Water & Heating

Hot Water Source:	Calorifier & Rinnai Gas Boiler
Central Heating:	n/a
Stove Make/Type:	Solid Fuel Stove
Water Tank Capacity:	1100 Litres

## Electrical System

12v:	Yes
240v:	Yes
Inverter:	Pure sine Wave 2500w
Generator:	n/a
Batteries:	1 starter, 4 Leisure
Solar Panels:	Two Solar Panels
Notes:	MPPT solar charge controller



**Viewings by appointment  
only. Please call us to arrange.**



## Galley

Cooker: Beko  
Fridge/Freezer: Shoreline  
Gas/12v/240v:: 12v  
Additional Information:

## Accommodation

No. of Berths: Two  
Fixed: Double Bed  
Additional Berths: n/a

## Bathroom

Toilet: Cassette  
Bath / Shower: Shower over bath  
Vanity Basin: Yes  
Additional Information: Walkthrough Bathroom

## Vessel History

BSC/RCD: BSC valid until March 2025  
Maintenance: Engine serviced 2023  
Blacked with 6 anodes June 2024.

## Additional Information

Cratch Cover. Side Hatch.

Please Note:

No guarantee is given or implied with regards to specification but descriptions are given in good faith. All vessels are sold without warranty or condition as to the fitness either expressed or implied by status or otherwise. No appliances or systems have been tested. All measurements stated are approximate. These details are not intended to, and do not, form any part of any current or future contract. In this transaction we are acting as Brokers only. All sales subject to contract. We are relying on information supplied solely by the seller and the Company cannot be held responsible or liable if information is proven to be inaccurate. All information is given as a guide. Plating thickness cannot be measured during Nationwide Boat Sales visit while the boat is in the water and is based on information supplied by the owner. A prospective buyer is strongly advised to check the particulars and where appropriate at their own expense to employ a qualified insured Marine Surveyor to carry out a survey of the vessel. It is ultimately the responsibility of the buyer to ensure that all the particulars are accurate prior or during the purchase of the boat. Nationwide Boat Sales advises that a qualified independent surveyor carries out a full out of water survey for every vessel.