



Clara - Narrowboat

£39,950

Introducing Clara, a 52ft 6' Semi-Trad built by Colecraft in 1986, equipped with a BMC 1.5 engine and Hurth gearbox for smooth travel. It features new batteries, a new Bush cooker and a new Dometic fridge. Clara has a new 6mm baseplate, 2pac epoxy blacking (2024), and a Boat Safety Scheme valid until 2028, ready for immediate departure.

- Semi-Trad Stern
- BMC 1.5 Engine
- 52ft 6' by 6ft 10'
- Staffordshire



Scan here for the
3D Tour

Boat Specification

Plating Specification:	Steel*
Hull Shape:	Flat Bottom
Flooring:	Wooden
Cabin Sides:	Tongue & Groove
Insulation:	Polystyrene
Windows:	Top Opening & Portholes

Engine Details

Engine Make/Model:	BMC 1.5
No. Cylinders:	Four
Cooling Type:	Keel
Gear Box Make/Model:	Hurth
Fuel Type:	Diesel
Fuel Tank Capacity:	150 Litres
Bow Thruster:	n/a

Additional Information:

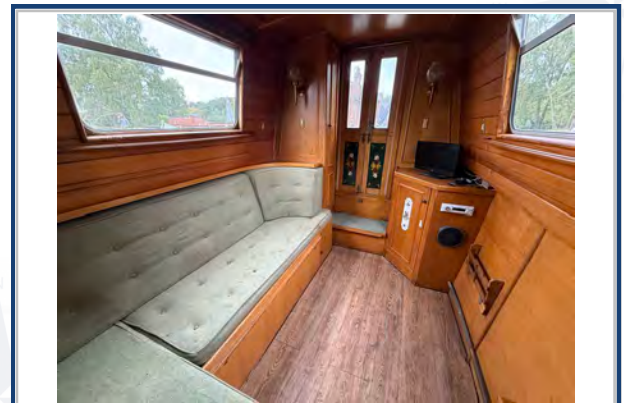
Hot Water & Heating

Hot Water Source:	Calorifier/Webasto**
Central Heating:	Webasto
Stove Make/Type:	Hardy Hamlet Multi Fuel
Water Tank Capacity:	750 Litres

Electrical System

12v:	Yes
240v:	Yes
Inverter:	800w Inverter
Generator:	n/a
Batteries:	1 Starter, 3 Leisure (New)
Solar Panels:	n/a

Notes:



**Viewings by appointment
only. Please call us to arrange.**



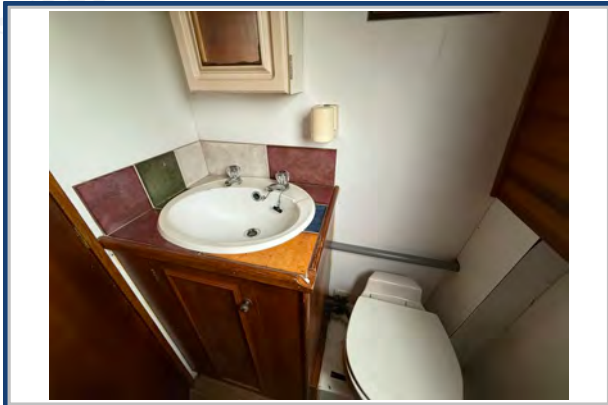
Galley

Cooker: Bush (New)
 Fridge/Freezer: Dometic (New)
 Gas/12v/240v:: 12v
 Additional Information:



Accommodation

No. of Berths: Four
 Fixed: Double Bed
 Additional Berths: L-shaped seating into a double bed



Bathroom

Toilet: Pump Out
 Bath / Shower: Hip Bath with Shower over
 Vanity Basin: Yes
 Additional Information:



Vessel History

BSC/RCD: BSC valid until July 2028
 Maintenance: Blacked with 2pac epoxy 2024.

Additional Information

- * New 6mm base plate
- **Immersion heater fitted but not wired up.

Please Note:

No guarantee is given or implied with regards to specification but descriptions are given in good faith. All vessels are sold without warranty or condition as to the fitness either expressed or implied by status or otherwise. No appliances or systems have been tested. All measurements stated are approximate. These details are not intended to, and do not, form any part of any current or future contract. In this transaction we are acting as Brokers only. All sales subject to contract. We are relying on information supplied solely by the seller and the Company cannot be held responsible or liable if information is proven to be inaccurate. All information is given as a guide. Plating thickness cannot be measured during Nationwide Boat Sales visit while the boat is in the water and is based on information supplied by the owner. A prospective buyer is strongly advised to check the particulars and where appropriate at their own expense to employ a qualified insured Marine Surveyor to carry out a survey of the vessel. It is ultimately the responsibility of the buyer to ensure that all the particulars are accurate prior or during the purchase of the boat. Nationwide Boat Sales advises that a qualified independent surveyor carries out a full out of water survey for every vessel.