



Zeppelein - Narrowboat

£39,950

Introducing Zeppelein, a 65ft Trad built by Pat Buckle. With heaps of character from the unusual Piranha pine wood she oozes charm. With room for the addition of extra berths or a relaxing lounge area. Zeppelein is ready for you make her your own!

- Traditional Stern
- Barrus Shire 42hp Engine
- 65ft by 6ft 10'
- Staffordshire



Scan here for the
3D Tour

Boat Specification

Plating Specification:	Steel 10/6/4
Hull Shape:	Flat Bottom
Flooring:	Wooden
Cabin Sides:	Piranha Pine
Insulation:	Unknown
Windows:	Top Opening

Engine Details

Engine Make/Model:	Barrus Shire 42hp
No. Cylinders:	Four
Cooling Type:	Keel
Gear Box Make/Model:	Hurth
Fuel Type:	Diesel
Fuel Tank Capacity:	40 Gallons approx
Bow Thruster:	n/a

Additional Information:

Hot Water & Heating

Hot Water Source:	Calorifier/Webasto
Central Heating:	Webasto (fitted 2024)
Stove Make/Type:	Solid Fuel Stove
Water Tank Capacity:	100 Gallons approx

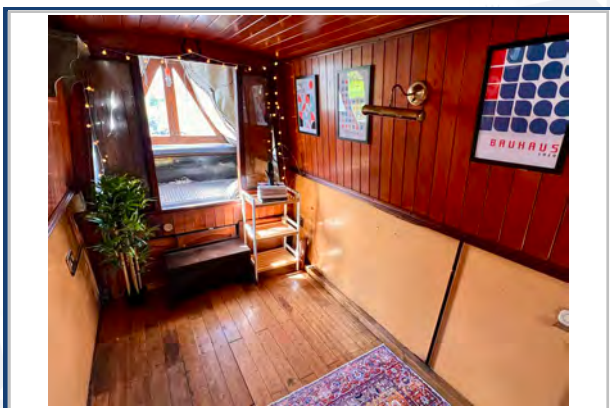
Electrical System

12v:	Yes
240v:	Yes
Inverter:	1kw Pure Sign Wave Inverter/Charger
Generator:	n/a
Batteries:	1 Starter, 3 Leisure (New 2024)
Solar Panels:	n/a

Notes:



Viewings by appointment
only. Please call us to arrange.



Galley

Cooker: Yes
 Fridge/Freezer: Space for a fridge
 Gas/12v/240v:: n/a
 Additional Information: Laminate worktops

Accommodation

No. of Berths: Two
 Fixed: Fixed Double
 Additional Berths: Potential for additional berths within the saloon

Bathroom

Toilet: Porta Potti
 Bath / Shower: Bath
 Vanity Basin: Yes
 Additional Information: Walkthrough Bathroom

Vessel History

BSC/RCD: New BSC will be issued for completion
 Maintenance: Grit blasted and 2pac epoxy 2024
 New anodes fitted 2024. Webasto (reconditioned) fitted 2024
 Batteries new 2024

Additional Information

Cratch cover. Side Hatch.

Please Note:

No guarantee is given or implied with regards to specification but descriptions are given in good faith. All vessels are sold without warranty or condition as to the fitness either expressed or implied by status or otherwise. No appliances or systems have been tested. All measurements stated are approximate. These details are not intended to, and do not, form any part of any current or future contract. In this transaction we are acting as Brokers only. All sales subject to contract. We are relying on information supplied solely by the seller and the Company cannot be held responsible or liable if information is proven to be inaccurate. All information is given as a guide. Plating thickness cannot be measured during Nationwide Boat Sales visit while the boat is in the water and is based on information supplied by the owner. A prospective buyer is strongly advised to check the particulars and where appropriate at their own expense to employ a qualified insured Marine Surveyor to carry out a survey of the vessel. It is ultimately the responsibility of the buyer to ensure that all the particulars are accurate prior or during the purchase of the boat. Nationwide Boat Sales advises that a qualified independent surveyor carries out a full out of water survey for every vessel.