



## Tranquility - Houseboat

£19,950

Introducing Tranquility, a 60ft by 12ft 6' Houseboat. She is an ongoing project in need of work to the hull and addition of an engine. Ultimately she could become an ideal floating home for cruising the waters.

- Houseboat
- No Engine
- 60ft by 12ft 6'
- Leicestershire



Scan here for the  
3D Tour

## Boat Specification

Plating Specification: Steel  
 Hull Shape: Flat bottom  
 Flooring: Laminate  
 Cabin Sides: Unknown  
 Insulation: Rockwool  
 Windows:

## Engine Details

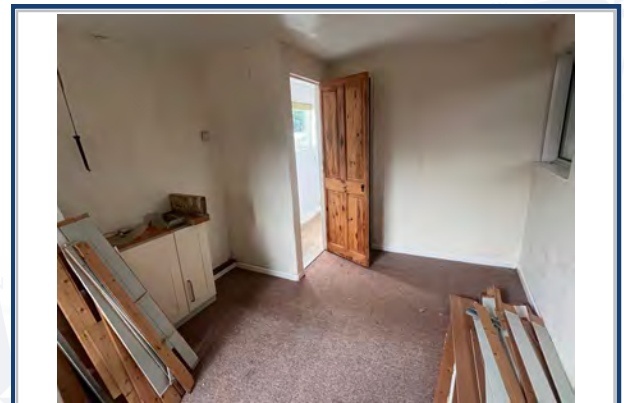
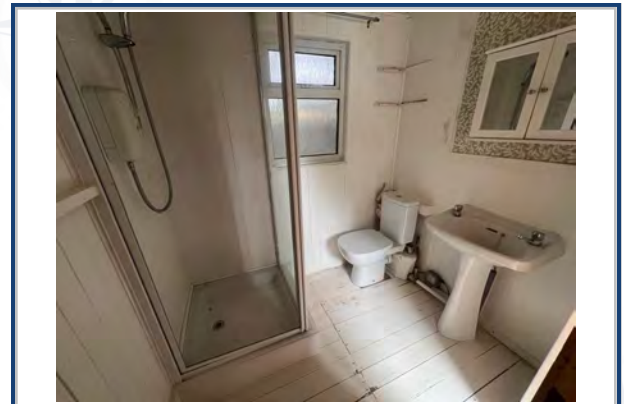
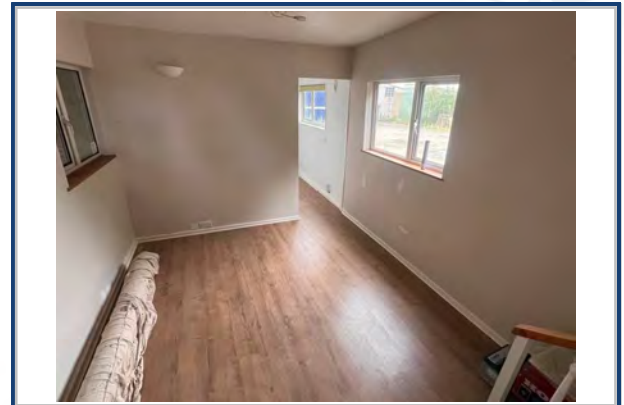
Engine Make/Model: n/a  
 No. Cylinders: n/a  
 Cooling Type: n/a  
 Gear Box Make/Model: n/a  
 Fuel Type: n/a  
 Fuel Tank Capacity: n/a  
 Bow Thruster: n/a  
 Additional Information: No Engine

## Hot Water & Heating

Hot Water Source: Unknown  
 Central Heating: n/a  
 Stove Make/Type: Morso Squirrel  
 Water Tank Capacity: 100g approx

## Electrical System

12v: n/a  
 240v: n/a  
 Inverter: n/a  
 Generator: Stand Alone Petrol  
 Batteries: 1 Starter, 1 Leisure  
 Solar Panels: n/a  
 Notes:



Viewings by appointment  
only. Please call us to arrange.



## Galley

Cooker: n/a

Fridge/Freezer: n/a

Gas/12v/240v:: n/a

**Additional Information:** Spaces for the addition of appliances

## Accommodation

No. of Berths: None

Fixed: n/a

**Additional Berths:** Potential for the addition of several berths

## Bathroom

Toilet: Cassette

Bath / Shower: Shower

Vanity Basin: Yes

**Additional Information:**

## Vessel History

BSC/RCD: n/a

**Maintenance:** In need of work throughout.

## Additional Information

An ongoing project which needs the sides and bottom of the hull replacing in 6mm steel

Please Note:

No guarantee is given or implied with regards to specification but descriptions are given in good faith. All vessels are sold without warranty or condition as to the fitness either expressed or implied by status or otherwise. No appliances or systems have been tested. All measurements stated are approximate. These details are not intended to, and do not, form any part of any current or future contract. In this transaction we are acting as Brokers only. All sales subject to contract. We are relying on information supplied solely by the seller and the Company cannot be held responsible or liable if information is proven to be inaccurate. All information is given as a guide. Plating thickness cannot be measured during Nationwide Boat Sales visit while the boat is in the water and is based on information supplied by the owner. A prospective buyer is strongly advised to check the particulars and where appropriate at their own expense to employ a qualified insured Marine Surveyor to carry out a survey of the vessel. It is ultimately the responsibility of the buyer to ensure that all the particulars are accurate prior or during the purchase of the boat. Nationwide Boat Sales advises that a qualified independent surveyor carries out a full out of water survey for every vessel.