



The Architeuthis - Widebeam Cruiser

£99,950

Introducing The Architeuthis, a stunning 60ft by 12ft Widebeam built by Collingwood in 2017. Providing a wealth of space ideal for living aboard and cruising the waterways.

- Widebeam Cruiser
- Canaline 60hp
- 60ft by 12ft
- London



Scan here for the
3D Tour

Boat Specification

Plating Specification:	Steel
Hull Shape:	Flat Bottom
Flooring:	Bamboo hardwood
Cabin Sides:	Oak paneling and trim
Insulation:	Unknown
Windows:	Portholes & Top Opening

Engine Details

Engine Make/Model:	Canaline 60hp
No. Cylinders:	Four
Cooling Type:	Keel
Gear Box Make/Model:	PRM 260
Fuel Type:	Diesel
Fuel Tank Capacity:	230Litres
Bow Thruster:	Vetus 95kgf/12v

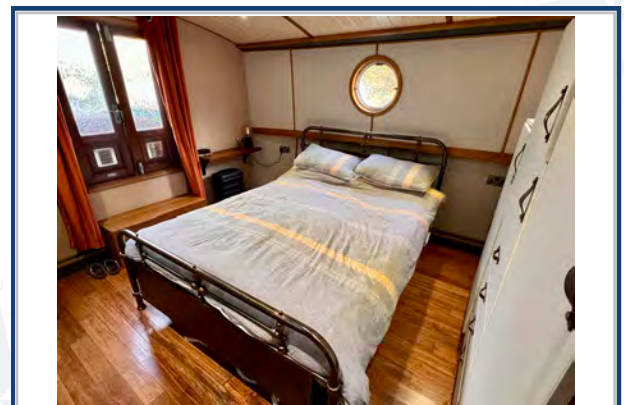
Additional Information:

Hot Water & Heating

Hot Water Source:	75L Calorifier/Immersion/Webasto
Central Heating:	Webasto 5kw
Stove Make/Type:	Solid Fuel
Water Tank Capacity:	425Litres

Electrical System

12v:	Yes
240v:	Yes
Inverter:	Victron Multiplus 3kw
Generator:	n/a
Batteries:	1 Starter, 4 Leisure, 1 Bow Thruster
Solar Panels:	1000w of Solar Panels
Notes:	Solar controllers.



**Viewings by appointment
only. Please call us to arrange.**



Galley

Cooker: DeLonghi
 Fridge/Freezer: Gorenje with freezer compartment
 Gas/12v/240v:: Unknown
 Additional Information: Whirlpool eco Washing Machine
 Solid oak cabinets, Iroko worktops, Belfast sink with brass faucet

Accommodation

No. of Berths: Two
 Fixed: Double Bed
 Additional Berths: Potential for more in the saloon

Bathroom

Toilet: Simploo Composting
 Bath / Shower: Brass shower & faucet
 Vanity Basin: Yes
 Additional Information:

Vessel History

BSC/RCD: BSC valid until July 2025
 Maintenance: Blacked with 2pac epoxy in 2017

Additional Information

Side Hatch. Pram cover.

Please Note:

No guarantee is given or implied with regards to specification but descriptions are given in good faith. All vessels are sold without warranty or condition as to the fitness either expressed or implied by status or otherwise. No appliances or systems have been tested. All measurements stated are approximate. These details are not intended to, and do not, form any part of any current or future contract. In this transaction we are acting as Brokers only. All sales subject to contract. We are relying on information supplied solely by the seller and the Company cannot be held responsible or liable if information is proven to be inaccurate. All information is given as a guide. Plating thickness cannot be measured during Nationwide Boat Sales visit while the boat is in the water and is based on information supplied by the owner. A prospective buyer is strongly advised to check the particulars and where appropriate at their own expense to employ a qualified insured Marine Surveyor to carry out a survey of the vessel. It is ultimately the responsibility of the buyer to ensure that all the particulars are accurate prior or during the purchase of the boat. Nationwide Boat Sales advises that a qualified independent surveyor carries out a full out of water survey for every vessel.