



Badger - Narrowboat

£64,950

Introducing Badger, a 60ft Trad, built by Colecraft in 1985. With a beautiful boatman's cabin upon entrance from the stern followed by the engine room. With a light & airy feel within the saloon she welcomes you onboard.

- Traditional Stern
- Morris 48hp Engine
- 60ft by 6ft 10'
- Hertfordshire



Scan here for the
3D Tour

Boat Specification

Plating Specification:	Steel
Hull Shape:	Unknown
Flooring:	Lino & Ply
Cabin Sides:	Tongue & Groove
Insulation:	Insulation Board
Windows:	Top Opening & Portholes

Engine Details

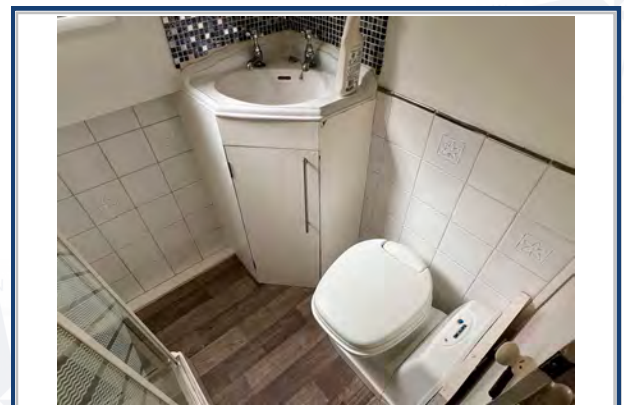
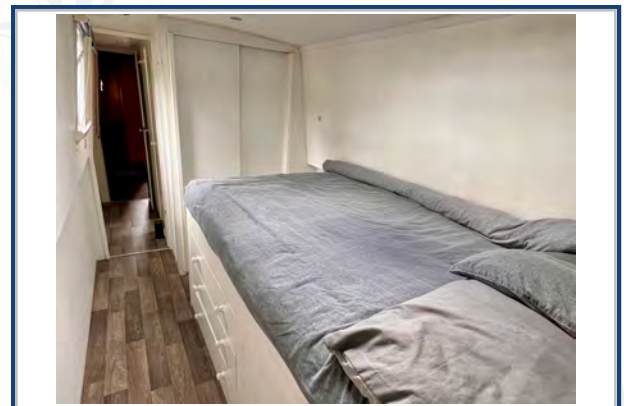
Engine Make/Model:	Morris 48hp
No. Cylinders:	Four
Cooling Type:	Unknown
Gear Box Make/Model:	Unknown
Fuel Type:	Diesel
Fuel Tank Capacity:	150 Litres
Bow Thruster:	n/a
Additional Information:	Engine Room

Hot Water & Heating

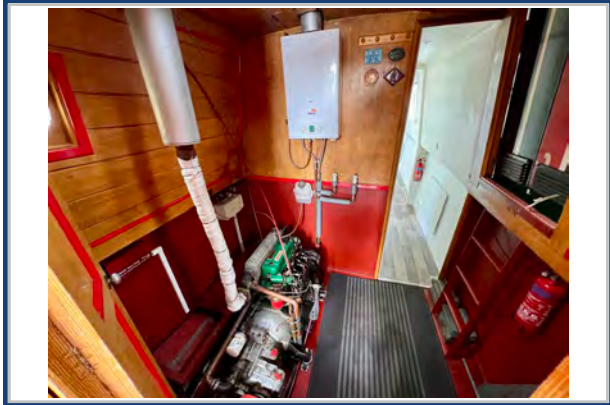
Hot Water Source:	Gas Boiler
Central Heating:	n/a
Stove Make/Type:	Epping & Stove in the saloon
Water Tank Capacity:	650 Litres

Electrical System

12v:	Yes
240v:	Yes
Inverter:	Power Inverter 1500w
Generator:	n/a
Batteries:	1 Starter, 3 Leisure
Solar Panels:	n/a
Notes:	



Viewings by appointment
only. Please call us to arrange.



Galley

Cooker: Thetford Caprice MK3
 Fridge/Freezer: Indesit
 Gas/12v/240v:: 240v
 Additional Information: Laminate worktops

Accommodation

No. of Berths: Six
 Fixed: Double Bed
 Additional Berths: Boatmans Cabin & L-Shaped Seating

Bathroom

Toilet: Cassette
 Bath / Shower: Shower
 Vanity Basin: Yes
 Additional Information:

Vessel History

BSC/RCD: BSC valid until August 2024
 Maintenance: Blacked 2021. Serviced June 2023.

Additional Information

Cratch cover, Side Hatches.
 Engine Room & Boatman's Cabin

Please Note:

No guarantee is given or implied with regards to specification but descriptions are given in good faith. All vessels are sold without warranty or condition as to the fitness either expressed or implied by status or otherwise. No appliances or systems have been tested. All measurements stated are approximate. These details are not intended to, and do not, form any part of any current or future contract. In this transaction we are acting as Brokers only. All sales subject to contract. We are relying on information supplied solely by the seller and the Company cannot be held responsible or liable if information is proven to be inaccurate. All information is given as a guide. Plating thickness cannot be measured during Nationwide Boat Sales visit while the boat is in the water and is based on information supplied by the owner. A prospective buyer is strongly advised to check the particulars and where appropriate at their own expense to employ a qualified insured Marine Surveyor to carry out a survey of the vessel. It is ultimately the responsibility of the buyer to ensure that all the particulars are accurate prior or during the purchase of the boat. Nationwide Boat Sales advises that a qualified independent surveyor carries out a full out of water survey for every vessel.