

The Little Nipper - Narrowboat

£12,950

Introducing The Little Nipper a 23ft Cruiser built by Terry Babcock in 1995. Little Nipper provides everything you need for cruising the waters or as a home from home when working away.

- Cruiser Stern
- Beta Marine 20hp Engine
- 23ft by 6ft 10'
- Staffordshire



Scan here for the
3D Tour

Boat Specification

Plating Specification:	Steel
Hull Shape:	Flat Bottom
Flooring:	Plywood
Cabin Sides:	Ply with T&G over
Insulation:	Sprayfoam
Windows:	Top Opening

Engine Details

Engine Make/Model:	Beta Marine
No. Cylinders:	20hp
Cooling Type:	Keel
Gear Box Make/Model:	PRM 80 D2
Fuel Type:	Diesel
Fuel Tank Capacity:	90 Litres
Bow Thruster:	n/a

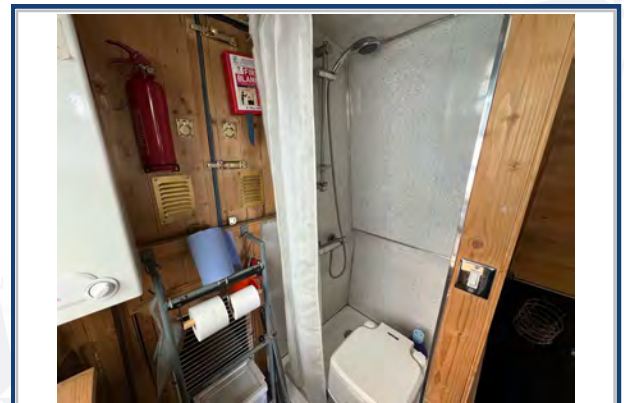
Additional Information:

Hot Water & Heating

Hot Water Source:	Morco Gas boiler
Central Heating:	n/a
Stove Make/Type:	Solid Fuel Stove (Hardy 4)
Water Tank Capacity:	70L + Two 45L containters

Electrical System

12v:	Yes
240v:	Shoreline plug in connection
Inverter:	n/a
Generator:	n/a
Batteries:	1 Starter, 1 Leisure
Solar Panels:	Solar Panel
Notes:	Solar Charge Controller



**Viewings by appointment
only. Please call us to arrange.**



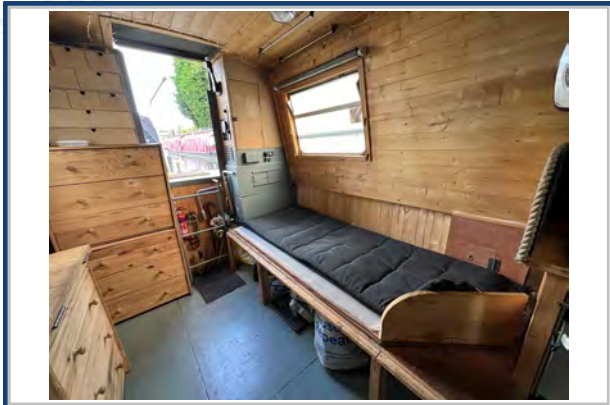
Galley

Cooker: Voyager 4500
 Fridge/Freezer: Cool box
 Gas/12v/240v:: n/a
 Additional Information:



Accommodation

No. of Berths: Two
 Fixed: Single bunk which pulls out into a double
 Additional Berths: n/a



Bathroom

Toilet: Cassette
 Bath / Shower: Shower
 Vanity Basin: n/a
 Additional Information:



Vessel History

BSC/RCD: BSC Aug 2025
 Maintenance: Blacked 2022

Additional Information

Security Bars.

Please Note:

No guarantee is given or implied with regards to specification but descriptions are given in good faith. All vessels are sold without warranty or condition as to the fitness either expressed or implied by status or otherwise. No appliances or systems have been tested. All measurements stated are approximate. These details are not intended to, and do not, form any part of any current or future contract. In this transaction we are acting as Brokers only. All sales subject to contract. We are relying on information supplied solely by the seller and the Company cannot be held responsible or liable if information is proven to be inaccurate. All information is given as a guide. Plating thickness cannot be measured during Nationwide Boat Sales visit while the boat is in the water and is based on information supplied by the owner. A prospective buyer is strongly advised to check the particulars and where appropriate at their own expense to employ a qualified insured Marine Surveyor to carry out a survey of the vessel. It is ultimately the responsibility of the buyer to ensure that all the particulars are accurate prior or during the purchase of the boat. Nationwide Boat Sales advises that a qualified independent surveyor carries out a full out of water survey for every vessel.