



Little Daisy - Narrowboat

£9,995

Introducing Little Daisy, a delightful 27ft Cruiser with an Unknown builder, built in 1984. Complete with a pram cover and solar panels. She's got plenty of life in her yet and plenty of space for you to make your own.

- Cruiser Stern
- Vetus Engine
- 27ft by 6ft 10'
- Lancashire



Scan here for the
3D Tour

Boat Specification

Plating Specification:	Steel
Hull Shape:	Flat Bottom
Flooring:	Laminate
Cabin Sides:	Ply
Insulation:	Unknown
Windows:	Top Opening

Engine Details

Engine Make/Model:	Vetus
No. Cylinders:	Two
Cooling Type:	Water
Gear Box Make/Model:	Unknown
Fuel Type:	Diesel
Fuel Tank Capacity:	30g approx
Bow Thruster:	n/a

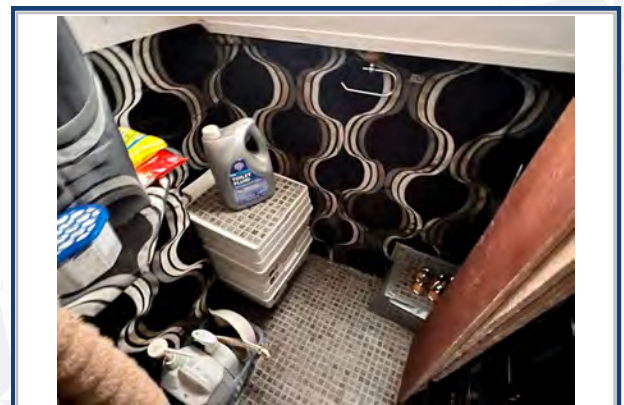
Additional Information:

Hot Water & Heating

Hot Water Source:	Water Heater
Central Heating:	n/a
Stove Make/Type:	n/a
Water Tank Capacity:	80g approx

Electrical System

12v:	Yes
240v:	Yes
Inverter:	Yes
Generator:	n/a
Batteries:	1 Starter, 2 Leisure
Solar Panels:	2 x 100w solar panels
Notes:	Electrics in need of attention



Viewings by appointment
only. Please call us to arrange.



Galley

Cooker: Nelson cooker
 Fridge/Freezer: n/a
 Gas/12v/240v:: n/a
 Additional Information:



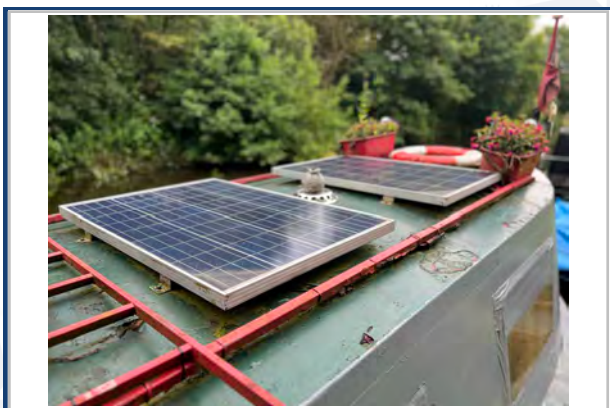
Accommodation

No. of Berths: Two
 Fixed: Double Bed
 Additional Berths: n/a



Bathroom

Toilet: Cassette
 Bath / Shower: n/a
 Vanity Basin: n/a
 Additional Information:



Vessel History

BSC/RCD: BSC 2025
 Maintenance: Blacked 2018 (2pac)

Additional Information

Pram cover.

Please Note:

No guarantee is given or implied with regards to specification but descriptions are given in good faith. All vessels are sold without warranty or condition as to the fitness either expressed or implied by status or otherwise. No appliances or systems have been tested. All measurements stated are approximate. These details are not intended to, and do not, form any part of any current or future contract. In this transaction we are acting as Brokers only. All sales subject to contract. We are relying on information supplied solely by the seller and the Company cannot be held responsible or liable if information is proven to be inaccurate. All information is given as a guide. Plating thickness cannot be measured during Nationwide Boat Sales visit while the boat is in the water and is based on information supplied by the owner. A prospective buyer is strongly advised to check the particulars and where appropriate at their own expense to employ a qualified insured Marine Surveyor to carry out a survey of the vessel. It is ultimately the responsibility of the buyer to ensure that all the particulars are accurate prior or during the purchase of the boat. Nationwide Boat Sales advises that a qualified independent surveyor carries out a full out of water survey for every vessel.