



## Leila Mai - Narrowboat

£14,950

Introducing Leila Mai, a wonderful 60ft Semi-Trad built by Alvechurch Boat Builders in 1997. Ample space for cruising. Please note the boat is in need of a full overplate to the base and sides and has been priced to reflect this.

- Semi-Trad Stern
- Isuzu 42hp Engine
- 60ft by 6ft 10'
- London



Scan here for the  
3D Tour

## Boat Specification

Plating Specification:	Steel
Hull Shape:	Flat Bottom
Flooring:	Lino
Cabin Sides:	Oak Veneer
Insulation:	Unknown
Windows:	Top Opening

## Engine Details

Engine Make/Model:	Isuzu 42hp
No. Cylinders:	Four
Cooling Type:	Water
Gear Box Make/Model:	Unknown
Fuel Type:	Diesel
Fuel Tank Capacity:	40g approx
Bow Thruster:	n/a

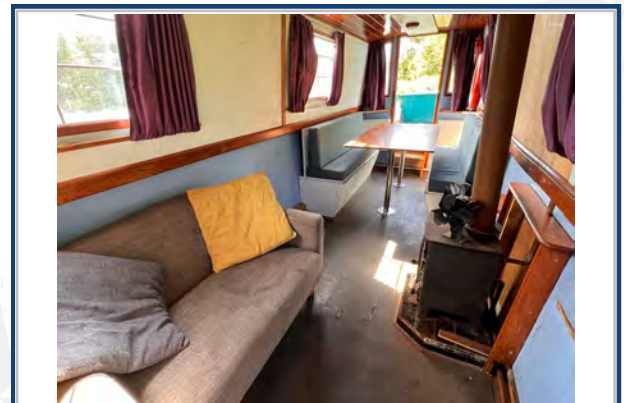
Additional Information:

## Hot Water & Heating

Hot Water Source:	Calorifier*/Immersion/Backboiler
Central Heating:	Backboiler (needs attention)
Stove Make/Type:	Solid Fuel Stove (needs attention)
Water Tank Capacity:	500L approx

## Electrical System

12v:	Yes
240v:	Yes
Inverter:	3kw Inverter
Generator:	n/a
Batteries:	1 Starter, 3 Leisure
Solar Panels:	2 Solar Panels
Notes:	Battery Charger



**Viewings by appointment  
only. Please call us to arrange.**



## Galley

Cooker: Oven installed ready to be connected  
 Fridge/Freezer: Inlander  
 Gas/12v/240v:: Unknown  
 Additional Information: Laminate worktops

## Accommodation

No. of Berths: Four  
 Fixed: Double Bed  
 Additional Berths: Dinette converts into a double

## Bathroom

Toilet: Pump Out Toilet  
 Bath / Shower: Shower over bath  
 Vanity Basin: Yes  
 Additional Information: Walkthrough Bathroom  
 The bathroom is in need of work.

## Vessel History

BSC/RCD: BSC 2025  
 Maintenance: Blacked 2024.

## Additional Information

\*Calorifier needs to be fitted.

Please note the boat is in need of a full overplate to the base and sides and has been priced to reflect this.

Please Note:

No guarantee is given or implied with regards to specification but descriptions are given in good faith. All vessels are sold without warranty or condition as to the fitness either expressed or implied by status or otherwise. No appliances or systems have been tested. All measurements stated are approximate. These details are not intended to, and do not, form any part of any current or future contract. In this transaction we are acting as Brokers only. All sales subject to contract. We are relying on information supplied solely by the seller and the Company cannot be held responsible or liable if information is proven to be inaccurate. All information is given as a guide. Plating thickness cannot be measured during Nationwide Boat Sales visit while the boat is in the water and is based on information supplied by the owner. A prospective buyer is strongly advised to check the particulars and where appropriate at their own expense to employ a qualified insured Marine Surveyor to carry out a survey of the vessel. It is ultimately the responsibility of the buyer to ensure that all the particulars are accurate prior or during the purchase of the boat. Nationwide Boat Sales advises that a qualified independent surveyor carries out a full out of water survey for every vessel.