



Leila Mai - Narrowboat

£32,950

Introducing Leila Mai, a wonderful 60ft Semi-Trad built by Alvechurch Boat Builders in 1997. With 4 berths on offer and the potential for additional berths within the saloon. Ample space for cruising. The boat is in need of some work.

- Semi-Trad Stern
- Isuzu 42hp Engine
- 60ft by 6ft 10'
- London



Scan here for the
3D Tour

Boat Specification

| | |
|------------------------|-------------|
| Plating Specification: | Steel |
| Hull Shape: | Flat Bottom |
| Flooring: | Lino |
| Cabin Sides: | Oak Veneer |
| Insulation: | Unknown |
| Windows: | Top Opening |

Engine Details

| | |
|----------------------|------------|
| Engine Make/Model: | Isuzu 42hp |
| No. Cylinders: | Four |
| Cooling Type: | Water |
| Gear Box Make/Model: | Unknown |
| Fuel Type: | Diesel |
| Fuel Tank Capacity: | 40g approx |
| Bow Thruster: | n/a |

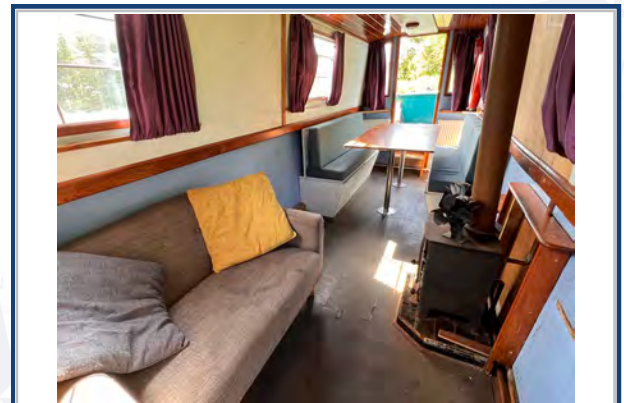
Additional Information:

Hot Water & Heating

| | |
|----------------------|------------------------------------|
| Hot Water Source: | Calorifier*/Immersion/Backboiler |
| Central Heating: | Backboiler (needs attention) |
| Stove Make/Type: | Solid Fuel Stove (needs attention) |
| Water Tank Capacity: | 500L approx |

Electrical System

| | |
|---------------|----------------------|
| 12v: | Yes |
| 240v: | Yes |
| Inverter: | 3kw Inverter |
| Generator: | n/a |
| Batteries: | 1 Starter, 3 Leisure |
| Solar Panels: | 2 Solar Panels |
| Notes: | Battery Charger |



**Viewings by appointment
only. Please call us to arrange.**



Galley

Cooker: Oven installed ready to be connected
 Fridge/Freezer: Inlander
 Gas/12v/240v:: Unknown
 Additional Information: Laminate worktops

Accommodation

No. of Berths: Four
 Fixed: Double Bed
 Additional Berths: Dinette converts into a double

Bathroom

Toilet: Pump Out Toilet
 Bath / Shower: Shower over bath
 Vanity Basin: Yes
 Additional Information: Walkthrough Bathroom
 The bathroom is in need of work.

Vessel History

BSC/RCD: BSC 2025
 Maintenance: Blacked 2024.

Additional Information

*Calorifier needs to be fitted.

Please Note:

No guarantee is given or implied with regards to specification but descriptions are given in good faith. All vessels are sold without warranty or condition as to the fitness either expressed or implied by status or otherwise. No appliances or systems have been tested. All measurements stated are approximate. These details are not intended to, and do not, form any part of any current or future contract. In this transaction we are acting as Brokers only. All sales subject to contract. We are relying on information supplied solely by the seller and the Company cannot be held responsible or liable if information is proven to be inaccurate. All information is given as a guide. Plating thickness cannot be measured during Nationwide Boat Sales visit while the boat is in the water and is based on information supplied by the owner. A prospective buyer is strongly advised to check the particulars and where appropriate at their own expense to employ a qualified insured Marine Surveyor to carry out a survey of the vessel. It is ultimately the responsibility of the buyer to ensure that all the particulars are accurate prior or during the purchase of the boat. Nationwide Boat Sales advises that a qualified independent surveyor carries out a full out of water survey for every vessel.