



Islay Mist - Narrowboat

£49,950

Introducing Islay Mist a 60ft Trad built by GT Boat Builders and fit out by Whiskey Boats in 2004. Islay Mist offers a space which could be used as an office/workshop or even as space for an additional bed. Looking for space? Islay Mist has you covered.

- Traditional Stern
- Beta 43hp
- 60ft by 6ft 10'
- Staffordshire



Scan here for the
3D Tour

Boat Specification

Plating Specification:	Steel 10/6/4
Hull Shape:	Flat Bottom
Flooring:	Solid Oak & Carpet
Cabin Sides:	Ply
Insulation:	Sprayfoam
Windows:	Top Opening & Portholes

Engine Details

Engine Make/Model:	Beta 43hp
No. Cylinders:	Four
Cooling Type:	Keel
Gear Box Make/Model:	PRM
Fuel Type:	Diesel
Fuel Tank Capacity:	40 gallons approx
Bow Thruster:	n/a

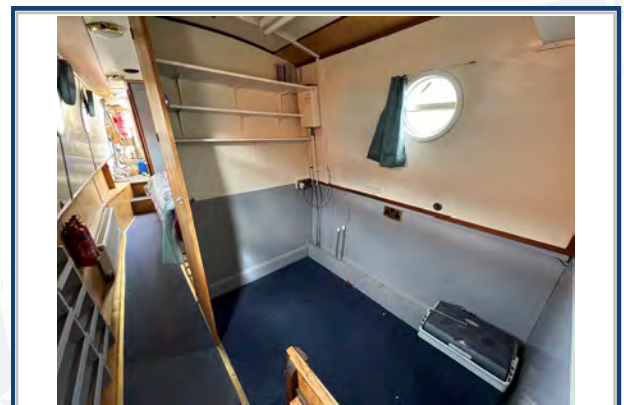
Additional Information:

Hot Water & Heating

Hot Water Source:	Calorifier/Immersion/Backboiler
Central Heating:	Backboiler*
Stove Make/Type:	Boatman Stove
Water Tank Capacity:	100 gallons approx

Electrical System

12v:	Yes
240v:	Yes
Inverter:	Mastervolt 2.5kw
Generator:	n/a
Batteries:	1 starter, 4 Leisure
Solar Panels:	300w of Solar
Notes:	Sterling 40amp smart charger. MPPT Solar Charge Controller



**Viewings by appointment
only. Please call us to arrange.**



Galley

Cooker: Country Leisure
 Fridge/Freezer: Cookology
 Gas/12v/240v:: Unknown
 Additional Information: Washing Machine.

Accommodation

No. of Berths: Two
 Fixed: Double Bed
 Additional Berths: Potential for more**

Bathroom

Toilet: Cassette
 Bath / Shower: Shower
 Vanity Basin: Yes
 Additional Information:

Vessel History

BSC/RCD: BSC valid until Sept 2024
 Maintenance: Blacked 2021

Additional Information

Cratch Cover.

*The central heating can be reconnected if you wish to add a system back in by replacing the Calorifier coil.

**Additional space which could be used as a 2nd bedroom or an office

Please Note:

No guarantee is given or implied with regards to specification but descriptions are given in good faith. All vessels are sold without warranty or condition as to the fitness either expressed or implied by status or otherwise. No appliances or systems have been tested. All measurements stated are approximate. These details are not intended to, and do not, form any part of any current or future contract. In this transaction we are acting as Brokers only. All sales subject to contract. We are relying on information supplied solely by the seller and the Company cannot be held responsible or liable if information is proven to be inaccurate. All information is given as a guide. Plating thickness cannot be measured during Nationwide Boat Sales visit while the boat is in the water and is based on information supplied by the owner. A prospective buyer is strongly advised to check the particulars and where appropriate at their own expense to employ a qualified insured Marine Surveyor to carry out a survey of the vessel. It is ultimately the responsibility of the buyer to ensure that all the particulars are accurate prior or during the purchase of the boat. Nationwide Boat Sales advises that a qualified independent surveyor carries out a full out of water survey for every vessel.