



## Diamond Cut - Narrowboat

£59,950

Introducing Diamond Cut, a 70ft Cruiser stern built by Pat Buckle in 1996. Featuring a spacious layout and top-notch equipment like a BMC 1.8 engine and a cozy Morso Squirrel stove. Ideal for comfortable living on the water with a fully-equipped kitchen, elegant bathroom, and versatile sleeping options.

- Cruiser Stern
- BMC 1.8 Engine
- 70ft by 6ft 10'
- Staffordshire



Scan here for the  
3D Tour

## Boat Specification

Plating Specification:	Steel 10/6/4
Hull Shape:	Flat Bottom
Flooring:	Vinyl
Cabin Sides:	Tongue & Groove
Insulation:	Sprayfoam
Windows:	Top Opening

## Engine Details

Engine Make/Model:	BMC 1.8
No. Cylinders:	Four
Cooling Type:	Keel
Gear Box Make/Model:	PRM 150
Fuel Type:	Diesel
Fuel Tank Capacity:	40 Gallons approx
Bow Thruster:	n/a

Additional Information:

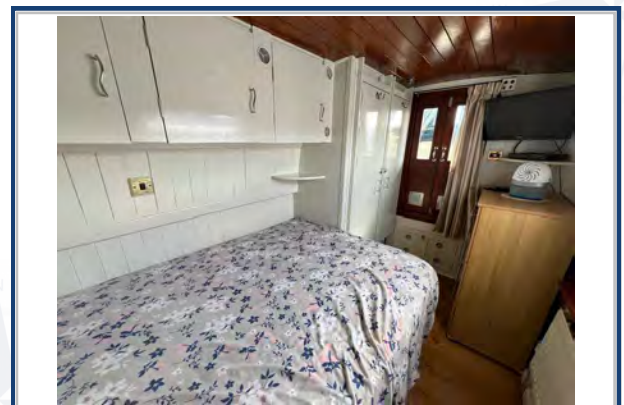
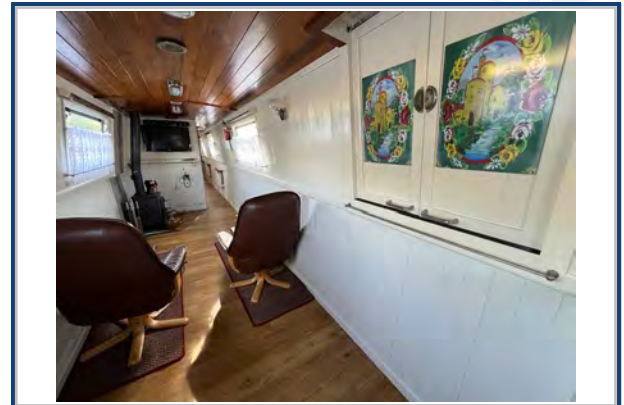
## Hot Water & Heating

Hot Water Source:	Calorifier/Immersion/Webasto
Central Heating:	Webasto
Stove Make/Type:	Morso Squirrel Stove
Water Tank Capacity:	100 Gallons approx*

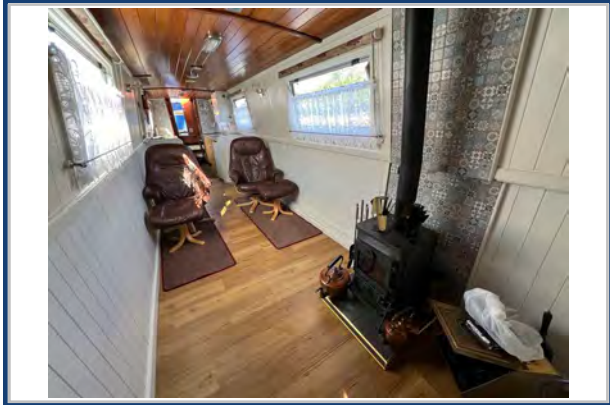
## Electrical System

12v:	Yes
240v:	Yes
Inverter:	Victron Phoenix Multiplus 3kw
Generator:	Stand Alone Petrol
Batteries:	1 Starter, 6 Leisure
Solar Panels:	2 Solar Panels (365 watts approx)
Notes:	Galvanic Isolator

VuCube fully automatic satellite system



**Viewings by appointment  
only. Please call us to arrange.**



## Galley

Cooker: Bompani Cooker  
 Fridge/Freezer: Essentials  
 Gas/12v/240v:: 240v  
 Additional Information: Beko Washing Machine,  
 Essentials Freezer

## Accommodation

No. of Berths: Two  
 Fixed: Double Bed  
 Additional Berths: Potential for additional within the  
 saloon or 2nd cabin space

## Bathroom

Toilet: Pump Out  
 Bath / Shower: Shower  
 Vanity Basin: Yes  
 Additional Information:

## Vessel History

BSC/RCD: BSC valid until 2025  
 Maintenance: Blacked in 2022.

## Additional Information

Large Side Hatch. Cratch & Pram Cover  
 \* Water level gauge within the bedroom for the water tank

Please Note:

No guarantee is given or implied with regards to specification but descriptions are given in good faith. All vessels are sold without warranty or condition as to the fitness either expressed or implied by status or otherwise. No appliances or systems have been tested. All measurements stated are approximate. These details are not intended to, and do not, form any part of any current or future contract. In this transaction we are acting as Brokers only. All sales subject to contract. We are relying on information supplied solely by the seller and the Company cannot be held responsible or liable if information is proven to be inaccurate. All information is given as a guide. Plating thickness cannot be measured during Nationwide Boat Sales visit while the boat is in the water and is based on information supplied by the owner. A prospective buyer is strongly advised to check the particulars and where appropriate at their own expense to employ a qualified insured Marine Surveyor to carry out a survey of the vessel. It is ultimately the responsibility of the buyer to ensure that all the particulars are accurate prior or during the purchase of the boat. Nationwide Boat Sales advises that a qualified independent surveyor carries out a full out of water survey for every vessel.