



Spirit of Cypry - Narrowboat

£52,950

Introducing Spirit of Cypry, a 50ft Semi-Trad built by W B Phillips in 2008. A Beta marine 38hp engine, bow thruster. Recently blacked in 2023, with new anodes, and valid BSC until June 2025 for new adventures.

- Semi-Trad Stern
- Beta 38hp Engine
- 50ft by 6ft 10'
- Milton Keynes



Scan here for the
3D Tour

Boat Specification

Plating Specification:	Steel (Thickness Unknown)
Hull Shape:	Flat Bottom
Flooring:	Karndean
Cabin Sides:	Oak
Insulation:	Unknown
Windows:	Portholes and Top Opening

Engine Details

Engine Make/Model:	Beta 38hp
No. Cylinders:	Four
Cooling Type:	Keel
Gear Box Make/Model:	PRM 150
Fuel Type:	Diesel
Fuel Tank Capacity:	40g approx
Bow Thruster:	Yes

Additional Information:

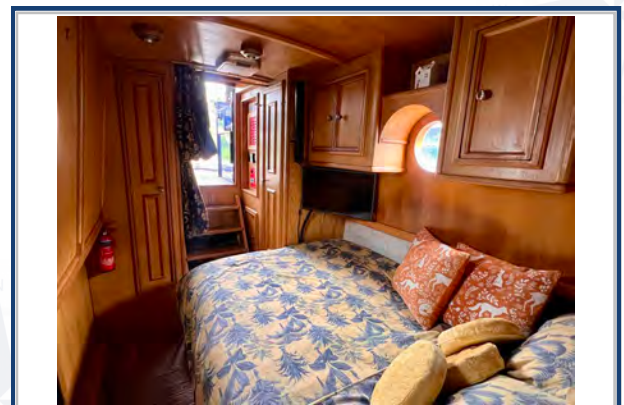
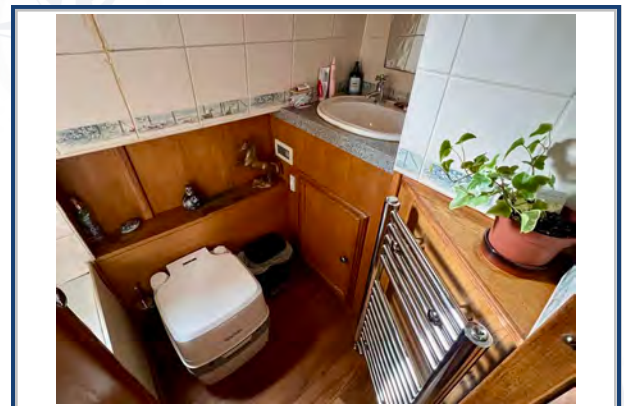
Hot Water & Heating

Hot Water Source:	Calorifier/Immersion
Central Heating:	Hurricane
Stove Make/Type:	Morso Squirrel
Water Tank Capacity:	100g approx

Electrical System

12v:	Yes
240v:	Yes
Inverter:	Victron 1600w
Generator:	n/a
Batteries:	1 Starter, 4 Leisure, 1 Bow thruster
Solar Panels:	n/a

Notes:



**Viewings by appointment
only. Please call us to arrange.**



Galley

Cooker: Yes
Fridge/Freezer: Fridgemaster
Gas/12v/240v:: 12v
Additional Information:

Accommodation

No. of Berths: Two
Fixed: Fixed Double
Additional Berths: Potential for additional berths within the saloon.

Bathroom

Toilet: Porta Potti
Bath / Shower: Shower over bath
Vanity Basin: Yes
Additional Information:

Vessel History

BSC/RCD: BSC June 2025
Maintenance: Blacked 2023 with 4 new anodes.

Additional Information

Cratch & Pram covers. Side Hatch.

Please Note:

No guarantee is given or implied with regards to specification but descriptions are given in good faith. All vessels are sold without warranty or condition as to the fitness either expressed or implied by status or otherwise. No appliances or systems have been tested. All measurements stated are approximate. These details are not intended to, and do not, form any part of any current or future contract. In this transaction we are acting as Brokers only. All sales subject to contract. We are relying on information supplied solely by the seller and the Company cannot be held responsible or liable if information is proven to be inaccurate. All information is given as a guide. Plating thickness cannot be measured during Nationwide Boat Sales visit while the boat is in the water and is based on information supplied by the owner. A prospective buyer is strongly advised to check the particulars and where appropriate at their own expense to employ a qualified insured Marine Surveyor to carry out a survey of the vessel. It is ultimately the responsibility of the buyer to ensure that all the particulars are accurate prior or during the purchase of the boat. Nationwide Boat Sales advises that a qualified independent surveyor carries out a full out of water survey for every vessel.