

Pannonica - Narrowboat

£34,950

Meet Pannonica, a 45ft Cruiser with a reverse layout built by R & D Fabrications in 1990. It features a BMC 38hp engine and a well-equipped galley. The bathroom has a Thetford ceramic cassette toilet. Freshly blacked in 2022, with a BSC until Nov 2024. Ready for your voyage!

- Cruiser Stern
- BMC 38hp Engine
- 45ft by 6ft 10'
- Staffordshire



Scan here for the
3D Tour

Boat Specification

Plating Specification:	Steel 10/8/6
Hull Shape:	Flat Bottom
Flooring:	Laminate
Cabin Sides:	Individual wooden cladding
Insulation:	Polyurethane insulation board
Windows:	Top Opening

Engine Details

Engine Make/Model:	BMC 2.5 (38hp) Engine
No. Cylinders:	Four
Cooling Type:	Keel
Gear Box Make/Model:	Unknown
Fuel Type:	Diesel
Fuel Tank Capacity:	200 Litres approx
Bow Thruster:	n/a

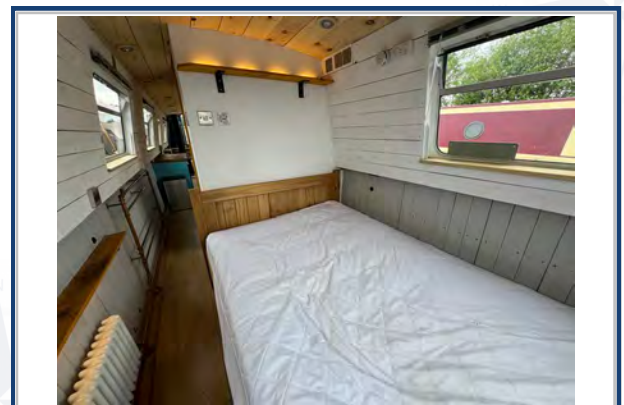
Additional Information:

Hot Water & Heating

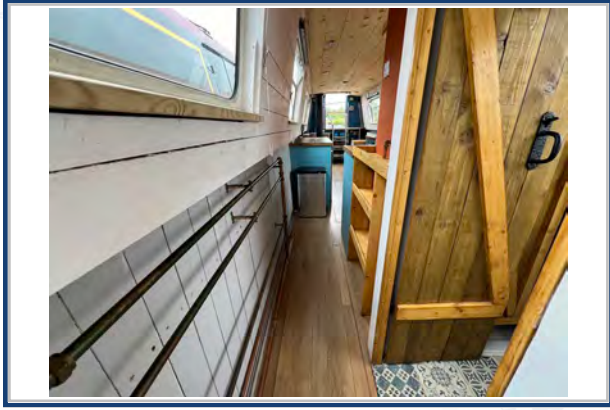
Hot Water Source:	Calorifier/Eberspacher
Central Heating:	Eberspacher
Stove Make/Type:	Morso Squirrel Multifuel Stove
Water Tank Capacity:	700 Litres approx

Electrical System

12v:	Yes
240v:	Yes
Inverter:	Victron Phoenix 800w
Generator:	n/a
Batteries:	1 Starter, 1 Leisure
Solar Panels:	540w solar panels
Notes:	Battery monitor.



**Viewings by appointment
only. Please call us to arrange.**



Galley

Cooker: Thetford Spinflo Duplex & Thetford Topline
 Fridge/Freezer: Vitrifrigo
 Gas/12v/240v:: 12v/240v
 Additional Information: Oak Worktops, Washing Machine

Accommodation

No. of Berths: Four
 Fixed: Fixed Double
 Additional Berths: Sofa Bed

Bathroom

Toilet: Thetford Ceramic Cassette
 Bath / Shower: Shower
 Vanity Basin: Yes
 Additional Information:

Vessel History

BSC/RCD: BSC Nov 2024
 Maintenance: Blacked 2022.
 Engine serviced 2024

Additional Information

Please Note:

No guarantee is given or implied with regards to specification but descriptions are given in good faith. All vessels are sold without warranty or condition as to the fitness either expressed or implied by status or otherwise. No appliances or systems have been tested. All measurements stated are approximate. These details are not intended to, and do not, form any part of any current or future contract. In this transaction we are acting as Brokers only. All sales subject to contract. We are relying on information supplied solely by the seller and the Company cannot be held responsible or liable if information is proven to be inaccurate. All information is given as a guide. Plating thickness cannot be measured during Nationwide Boat Sales visit while the boat is in the water and is based on information supplied by the owner. A prospective buyer is strongly advised to check the particulars and where appropriate at their own expense to employ a qualified insured Marine Surveyor to carry out a survey of the vessel. It is ultimately the responsibility of the buyer to ensure that all the particulars are accurate prior or during the purchase of the boat. Nationwide Boat Sales advises that a qualified independent surveyor carries out a full out of water survey for every vessel.