



## Kerensa - Narrowboat

£39,950

Introducing Kerensa, a fantastic 39ft 9' Tug style Trad built by Les Allen in 1980.  
With potential for change from a single berth.

- Tug Traditional Stern
- Barrus Shire Engine
- 39ft 9' by 6ft 10'
- Staffordshire



Scan here for the  
3D Tour

## Boat Specification

Plating Specification:	Steel
Hull Shape:	Flat Bottom
Flooring:	Wooden
Cabin Sides:	Ply
Insulation:	Sprayfoam
Windows:	Brass Portholes

## Engine Details

Engine Make/Model:	Barrus Shire 36hp
No. Cylinders:	Three
Cooling Type:	Keel
Gear Box Make/Model:	PRM 120
Fuel Type:	Diesel
Fuel Tank Capacity:	30 gallons approx
Bow Thruster:	n/a

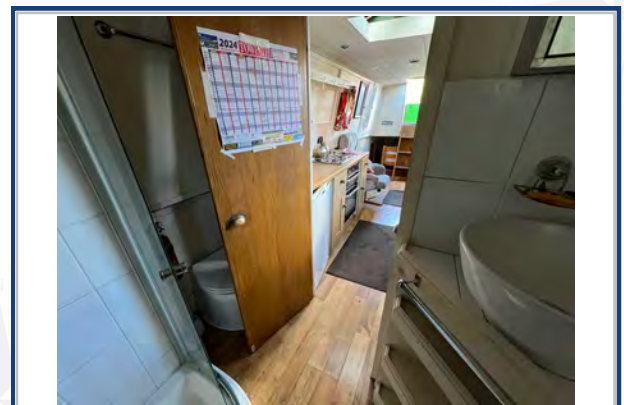
Additional Information:

## Hot Water & Heating

Hot Water Source:	Calorifier
Central Heating:	n/a
Stove Make/Type:	Mazona Solid Fuel Stove
Water Tank Capacity:	80 gallons approx

## Electrical System

12v:	Yes
240v:	Yes
Inverter:	Victron Atlas Combi 1500w
Generator:	n/a
Batteries:	1 Starter, 4 Leisure
Solar Panels:	2 x Stick on panels
Notes:	Victron MPPT charge controller



**Viewings by appointment  
only. Please call us to arrange.**



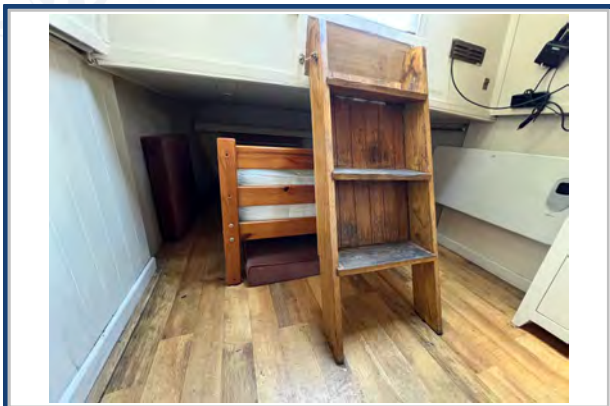
## Galley

Cooker: Thetford & 4 burner hob  
 Fridge/Freezer: Shoreline  
 Gas/12v/240v:: Unknown  
 Additional Information:



## Accommodation

No. of Berths: One  
 Fixed: n/a  
 Additional Berths: Single pull out bed under Tug deck.  
 Potential for additional berths in the saloon/tug deck.



## Bathroom

Toilet: Pump Out  
 Bath / Shower: Shower  
 Vanity Basin: Yes  
 Additional Information: Walkthrough Bathroom



## Vessel History

BSC/RCD: BSC 2025  
 Maintenance: Blacked with 2pac 2024  
 Recent survey 2023.

## Additional Information

Two Side Hatches. Storage locker on the Bow.  
 Tug style.

Please Note:

No guarantee is given or implied with regards to specification but descriptions are given in good faith. All vessels are sold without warranty or condition as to the fitness either expressed or implied by status or otherwise. No appliances or systems have been tested. All measurements stated are approximate. These details are not intended to, and do not, form any part of any current or future contract. In this transaction we are acting as Brokers only. All sales subject to contract. We are relying on information supplied solely by the seller and the Company cannot be held responsible or liable if information is proven to be inaccurate. All information is given as a guide. Plating thickness cannot be measured during Nationwide Boat Sales visit while the boat is in the water and is based on information supplied by the owner. A prospective buyer is strongly advised to check the particulars and where appropriate at their own expense to employ a qualified insured Marine Surveyor to carry out a survey of the vessel. It is ultimately the responsibility of the buyer to ensure that all the particulars are accurate prior or during the purchase of the boat. Nationwide Boat Sales advises that a qualified independent surveyor carries out a full out of water survey for every vessel.