



Pooh Bear - Widebeam

£184,950

Introducing Pooh Bear, a 68ft by 12ft Widebeam crafted by Aqualine in 2021. With ample space and storage throughout. A remarkable Velux roof light and the benefit of two cabins. Propulsion aided by the Sidepower bow thruster.

- Widebeam Cruiser
- Barrus Shire 70hp engine
- 69ft by 12ft
- Derbyshire



Scan here for the
3D Tour

Boat Specification

| | |
|------------------------|----------------------------|
| Plating Specification: | Steel 10/6/5/4 |
| Hull Shape: | Flat Bottom |
| Flooring: | Polyflor Camero throughout |
| Cabin Sides: | Ply |
| Insulation: | Sprayfoam |
| Windows: | Velux rooflight |

Engine Details

| | |
|----------------------|-------------------|
| Engine Make/Model: | Barrus Shire 70hp |
| No. Cylinders: | Four |
| Cooling Type: | Keel |
| Gear Box Make/Model: | PRM 280 |
| Fuel Type: | Diesel |
| Fuel Tank Capacity: | 95 gallons |
| Bow Thruster: | Sidepower |

Additional Information:

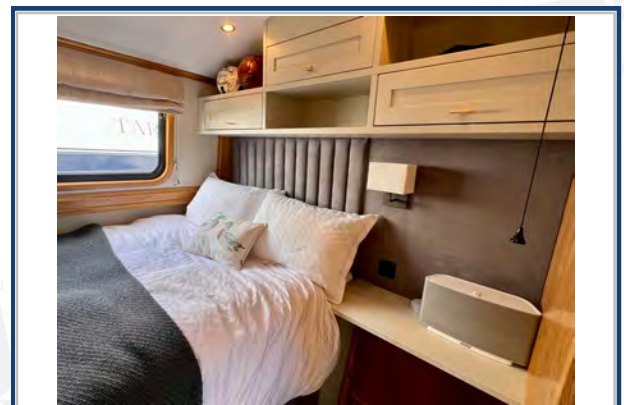
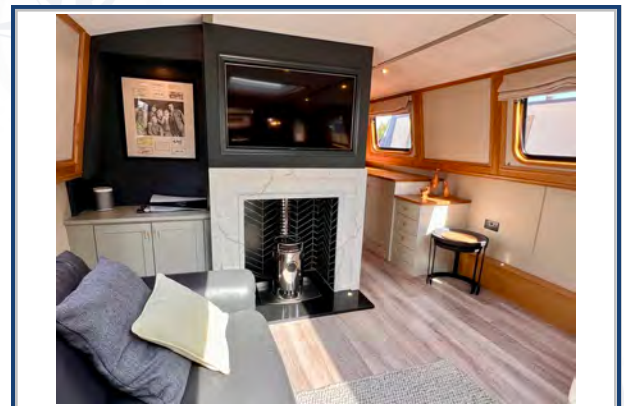
Built in Dehumidifier within the engine bay.

Hot Water & Heating

| | |
|----------------------|------------------------------|
| Hot Water Source: | Calorifier/Immersion/Webasto |
| Central Heating: | Webasto Pro 90 (9kw) |
| Stove Make/Type: | Refleks Diesel Stove |
| Water Tank Capacity: | 170 gallons |

Electrical System

| | |
|---------------|--|
| 12v: | Yes |
| 240v: | Yes |
| Inverter: | Victron Quattro 5000va/220amp |
| Generator: | n/a |
| Batteries: | 1 Starter, 4 Leisure & 2 Bow Thruster |
| Solar Panels: | Two |
| Notes: | Victron 220 Quattro battery charger. Tablet control and monitoring of batteries. Gel Tubular batteries. Automatic satellite system. Pop up Samsung TV in master cabin. |



**Viewings by appointment
only. Please call us to arrange.**



Galley

Cooker: Belling & Focal Hob
 Fridge/Freezer: Whirlpool
 Gas/12v/240v:: 240v
 Additional Information: Candy Washer/Dryer.
 Integrated Samsung Microwave, Bosch Dishwasher

Accommodation

No. of Berths: Four over 2 cabins
 Fixed: King Size
 Additional Berths: Double



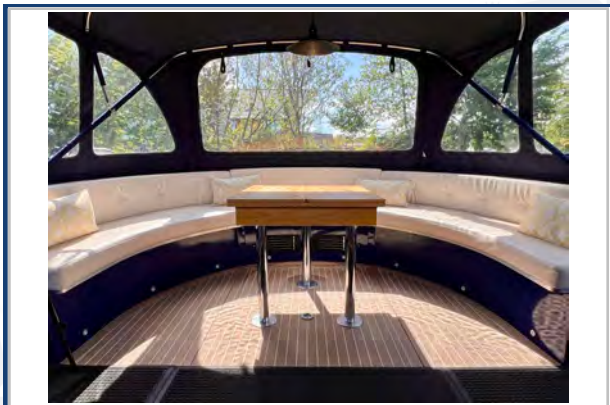
Bathroom

Toilet: Pump Out & Cassette
 Bath / Shower: Shower
 Vanity Basin: Yes
 Additional Information: Two Bathrooms
 Main housing a Shower, Basin & Pump Out.



Vessel History

BSC/RCD: RCD
 Maintenance: Blacked October 2023.



Additional Information

Explorer Stern with wood effect decking.
 Pram & Cratch cover. Side Hatch.
 Velux rooflight that opens electronically.

Please Note:

No guarantee is given or implied with regards to specification but descriptions are given in good faith. All vessels are sold without warranty or condition as to the fitness either expressed or implied by status or otherwise. No appliances or systems have been tested. All measurements stated are approximate. These details are not intended to, and do not, form any part of any current or future contract. In this transaction we are acting as Brokers only. All sales subject to contract. We are relying on information supplied solely by the seller and the Company cannot be held responsible or liable if information is proven to be inaccurate. All information is given as a guide. Plating thickness cannot be measured during Nationwide Boat Sales visit while the boat is in the water and is based on information supplied by the owner. A prospective buyer is strongly advised to check the particulars and where appropriate at their own expense to employ a qualified insured Marine Surveyor to carry out a survey of the vessel. It is ultimately the responsibility of the buyer to ensure that all the particulars are accurate prior or during the purchase of the boat. Nationwide Boat Sales advises that a qualified independent surveyor carries out a full out of water survey for every vessel.