

## Selene - Widebeam

£119,950

Introducing Selene, a stunning 65ft by 12ft Widebeam built by Collingwood in 2016 in the popular reverse layout. With a wealth of space and storage, comfortable living is a given with Selene.

- Widebeam Cruiser
- Canaline 60hp Engine
- 65ft by 12ft
- London



Scan here for the  
3D Tour

## Boat Specification

Plating Specification:	Steel 10/6/4
Hull Shape:	Flat Bottom
Flooring:	Laminate
Cabin Sides:	Oak Lining, T & G Ceiling
Insulation:	Sprayfoam
Windows:	Portholes & Large Opening

## Engine Details

Engine Make/Model:	Canaline 60hp
No. Cylinders:	Four Cylinders
Cooling Type:	Keel
Gear Box Make/Model:	PRM 150
Fuel Type:	Diesel
Fuel Tank Capacity:	80g Approx
Bow Thruster:	Yes
Additional Information:	

## Hot Water & Heating

Hot Water Source:	Calorifier/Immersion/ Autoterm
Central Heating:	Autoterm
Stove Make/Type:	Villager Solid Fuel Stove
Water Tank Capacity:	200g approx

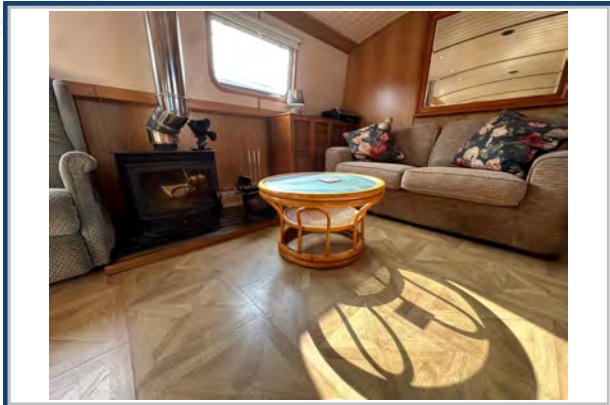
## Electrical System

12v:	Yes
240v:	Yes
Inverter:	Sterling Combi 2.5kw
Generator:	n/a
Batteries:	1 Starter, 3 Leisure
Solar Panels:	6 Solar Panels
Notes:	MPPT solar charge controller



**Viewings by appointment  
only. Please call us to arrange.**





## Galley

Cooker: Kenwood Cooker, Neff Gas Hob  
 Fridge/Freezer: Fridgemaster & Freezer  
 Gas/12v/240v:: 12v  
 Additional Information: Hotpoint Washing Machine

## Accommodation

No. of Berths: Four  
 Fixed: Queen Size  
 Additional Berths: Double Bed  
 Two Cabins.

## Bathroom

Toilet: Pump Out  
 Bath / Shower: Roll top bath with Shower over  
 Vanity Basin: Yes  
 Additional Information:

## Vessel History

BSC/RCD: BSC Feb 2027  
 Maintenance: Booked for blacking and hull  
 survey May 2024

## Additional Information

Side Hatch, Pram & Cratch Covers.  
 Reverse Layout.

Please Note:

No guarantee is given or implied with regards to specification but descriptions are given in good faith. All vessels are sold without warranty or condition as to the fitness either expressed or implied by status or otherwise. No appliances or systems have been tested. All measurements stated are approximate. These details are not intended to, and do not, form any part of any current or future contract. In this transaction we are acting as Brokers only. All sales subject to contract. We are relying on information supplied solely by the seller and the Company cannot be held responsible or liable if information is proven to be inaccurate. All information is given as a guide. Plating thickness cannot be measured during Nationwide Boat Sales visit while the boat is in the water and is based on information supplied by the owner. A prospective buyer is strongly advised to check the particulars and where appropriate at their own expense to employ a qualified insured Marine Surveyor to carry out a survey of the vessel. It is ultimately the responsibility of the buyer to ensure that all the particulars are accurate prior or during the purchase of the boat. Nationwide Boat Sales advises that a qualified independent surveyor carries out a full out of water survey for every vessel.