



Carpe Diem - Narrowboat

£44,950

Introducing Carpe Diem, a wonderful 57ft Trad built in 2003 by Hixon Boat Builders on a Cheshire Sail away hull. With an open saloon area leading onto the dining table and kitchen creating a homely area to settle down with the Aarrow stove.

- Traditional Stern
- Beta Marine 38hp Engine
- 57ft by 6ft 10'
- Staffordshire



Scan here for the
3D Tour

Boat Specification

Plating Specification:	Steel 10/6/4
Hull Shape:	Flat Bottom
Flooring:	Ply Base with Cork Surface
Cabin Sides:	Ply
Insulation:	Polystyrene
Windows:	Portholes & Top Opening

Engine Details

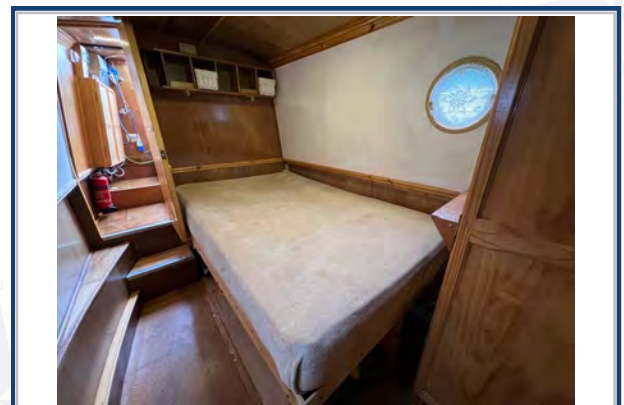
Engine Make/Model:	Beta Marine 38hp
No. Cylinders:	4
Cooling Type:	Keel
Gear Box Make/Model:	PRM
Fuel Type:	Diesel
Fuel Tank Capacity:	40g approx
Bow Thruster:	n/a
Additional Information:	Twin Alternators

Hot Water & Heating

Hot Water Source:	Calorifier/Immersion
Central Heating:	In need of attention (Not working)
Stove Make/Type:	Aarrow Solid Fuel Stove
Water Tank Capacity:	100g approx

Electrical System

12v:	Yes
240v:	Yes
Inverter:	Nikkai 800w QM82
Generator:	n/a
Batteries:	1 Starter, 3 Leisure (New)
Solar Panels:	2 Solar Panels
Notes:	Galvanic Isolator



**Viewings by appointment
only. Please call us to arrange.**



Galley

Cooker: Vanette Cooker
 Fridge/Freezer: Shoreline with freezer compartment
 Gas/12v/240v:: 12v
 Additional Information: Twin Tub Washer/Dryer
 Solid wood worktops.



Accommodation

No. of Berths: Five
 Fixed: Fixed Double
 Additional Berths: Dinette and seating conversion into
 a small single & a double.



Bathroom

Toilet: Cassette
 Bath / Shower: Shower
 Vanity Basin: Yes
 Additional Information: Walkthrough Bathroom.



Vessel History

BSC/RCD: Sept 2025
 Maintenance: Blacked 2019.

Additional Information

Cratch Cover. Side Hatch.

Please Note:

No guarantee is given or implied with regards to specification but descriptions are given in good faith. All vessels are sold without warranty or condition as to the fitness either expressed or implied by status or otherwise. No appliances or systems have been tested. All measurements stated are approximate. These details are not intended to, and do not, form any part of any current or future contract. In this transaction we are acting as Brokers only. All sales subject to contract. We are relying on information supplied solely by the seller and the Company cannot be held responsible or liable if information is proven to be inaccurate. All information is given as a guide. Plating thickness cannot be measured during Nationwide Boat Sales visit while the boat is in the water and is based on information supplied by the owner. A prospective buyer is strongly advised to check the particulars and where appropriate at their own expense to employ a qualified insured Marine Surveyor to carry out a survey of the vessel. It is ultimately the responsibility of the buyer to ensure that all the particulars are accurate prior or during the purchase of the boat. Nationwide Boat Sales advises that a qualified independent surveyor carries out a full out of water survey for every vessel.